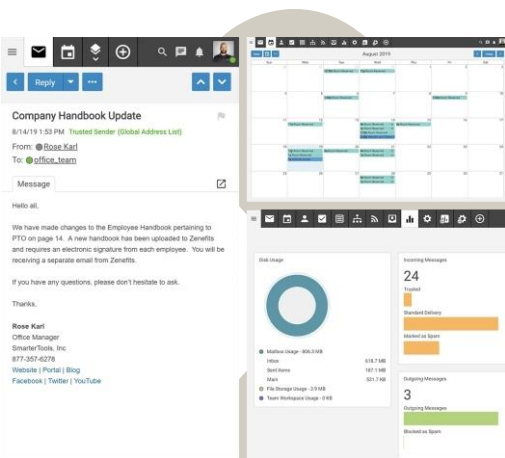


An Ideal Email Solution

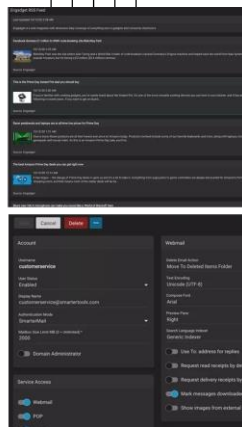


ENTP Mail is a full-featured email, group chat and a team collaboration service that is a perfect alternative for major mailing services. It is designed to provide, all the functionalities that the business needs, without sacrificing secure, reliable access to business and personal, communication.

However, ENTP Mail offers a much lower price. Making this the best-in-class email and collaboration solution for SMBs and Enterprises.



On the Web or In Your Hand

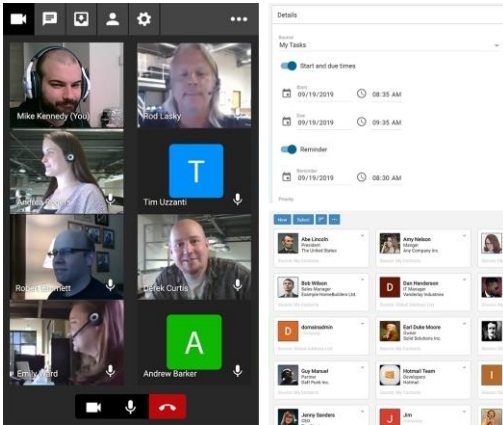


ENTP Mail includes one of the most powerful browser-based webmail clients on the market. It is compatible with all major desktop and mobile web browsers. Using the webmail clients eliminates the necessity of any other software. From email clients to calendar apps, freeing up disk space and eliminating the maintenance tasks that come from having more softwares installed on laptops and personal computers, it is definitely one hell of a task.

ENTP mail is compatible with any mobile and desktop browser.

ENTP Mail features include:

- ▶ Sending and receiving messages
- ▶ Robust HTML editor
- ▶ Ability to create disposable addresses
- ▶ On demand content filtering
- ▶ Domain-level and custom signatures
- ▶ Plus addressing for email organization
- ▶ Compliance footers and disclaimers



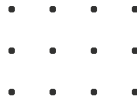
Total Collaboration

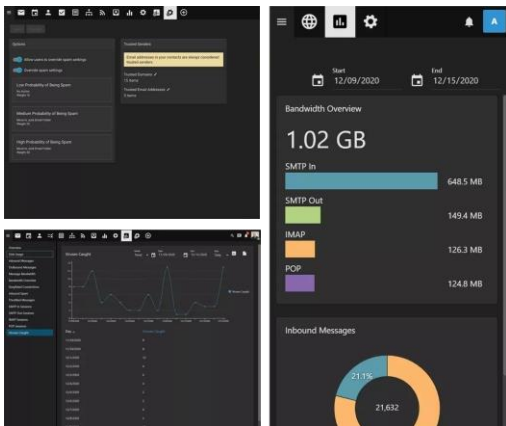


ENTP Mail offers a number of collaborating features that makes it easy to work together with team members, customers and partners. Whether using ENTP Mail's webmail client or a favorite desktop or a mobile client, ENTP Mail can help increase the overall productivity of an organization.

The collaboration features available:

- ▶ Organizational Calendars and Conference Rooms
- ▶ Shared Contacts, Tasks and Notes
- ▶ Group Chat for internal one to one text.
- ▶ Team Workspaces for internal or external team text.





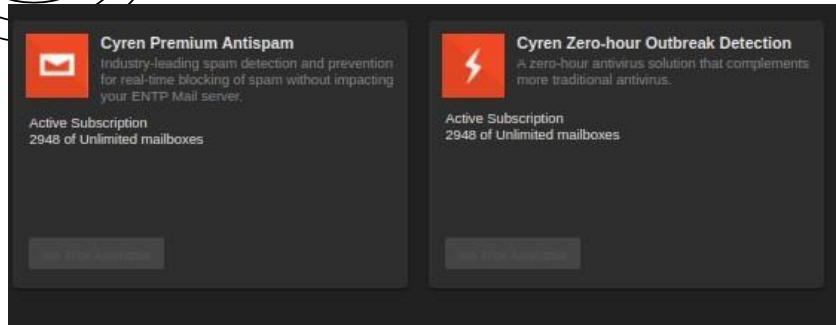
Industry Standard Email Security

ENTP Mail comes equipped with several email security features that are available without spending more or adding any third-party software. This includes spam filtering for incoming and outgoing emails.

Of course, if additional methods of prevention are preferred, ENTP Mail easily integrates with enterprise-level solutions such as, Cyren Zero-Hour Outbreak Detection, Cyren Premium Antispam.



Antispam Solutions



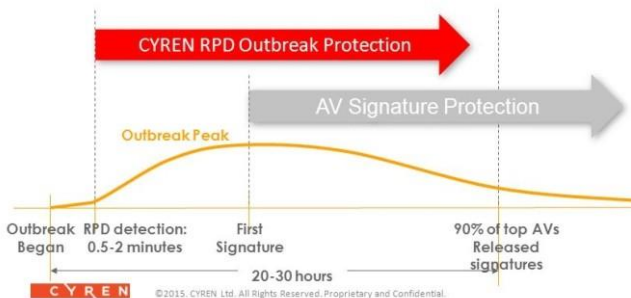
The image shows a dark-themed interface with two side-by-side cards. The left card features a red envelope icon, the title 'Cyren Premium Antispam', a description of industry-leading spam detection, and subscription statistics. The right card features a red lightning bolt icon, the title 'Cyren Zero-hour Outbreak Detection', a description of a zero-hour antivirus solution, and the same subscription statistics. Both cards have a grey rectangular button at the bottom.

Solution	Description	Active Subscriptions
Cyren Premium Antispam	Industry-leading spam detection and prevention for real-time blocking of spam without impacting your ENTP Mail server.	2948 of Unlimited mailboxes
Cyren Zero-hour Outbreak Detection	A zero-hour antivirus solution that complements more traditional antivirus.	2948 of Unlimited mailboxes

Structured, multi-layered spam prevention is included, for free, with any ENTP Mail license. Along with configuring the included antispam tools, custom rules for how to handle a message once it's scored as spam can be created. Messages can have their subject lines appended for easy identification by users or automatically filtered so that they never hit a user's inbox.

CYREN Zero Hour Malware Detection

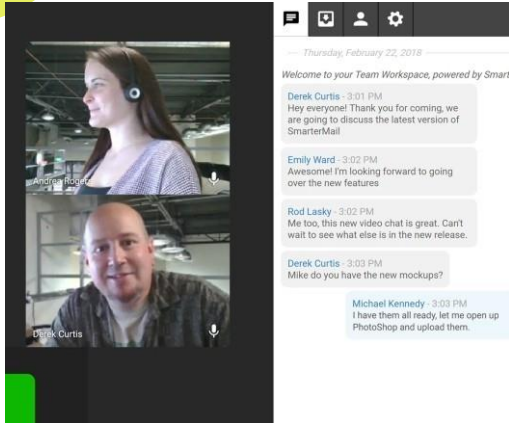
Antivirus Protection



Just as with antispam, ENTP Mail offers antivirus protection for a user's satisfaction. It provides measures on a variety of fronts. Each installation contains industry standard antivirus protection through Cyren Zero-Hour Outbreak Detection. This is at NO EXTRA COST to users, the tools are yours to use at your convenience.

The protection features include:

- ▶ Support for Cyren Zero-hour Outbreak Detection add-on
- ▶ Windows Defender integration
- ▶ Virus quarantine (outgoing messages only)

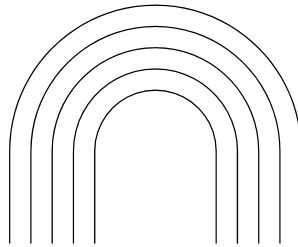


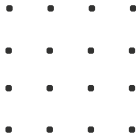
Team Workspaces

A robust team chat/team meeting solution that makes working with multiple different people, locations, efficient and effective.

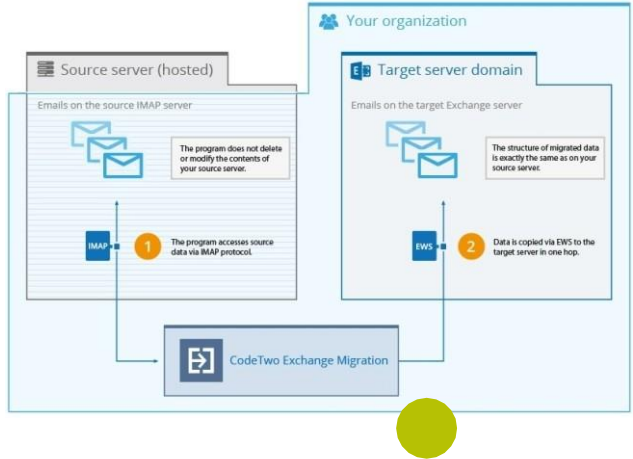
ENTP mail provides with:

- ▶ Video conference for up to 8 people (upcoming)
- ▶ Unlimited voice and text chat
- ▶ Password protection available
- ▶ Guest access capabilities





Access to Information & Email Migration

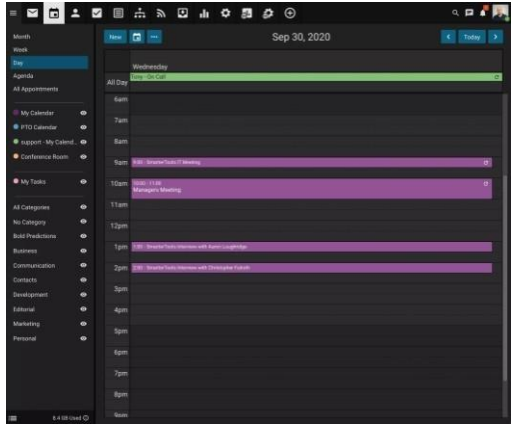


ENTP Mail gives you access to a number of related items when you view your contacts: recent emails plus the total number of emails you've received from that contact, any appointments, and a list of all the attachments you received. Events let YOU know when something occurs, so you have the information you want when you need it.

Once your account is set up in ENTP Mail, you have the ability to manage the migration of email to that new account, regardless of whether it is from Gmail, Hotmail or any other POP/IMAP account. All of this is available to access anywhere, at any time from a browser-based interface. You're not restricted to a single email client that resides on a computer you may, or may not, have access to.

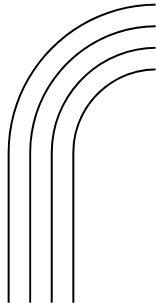


Calendars and Scheduling

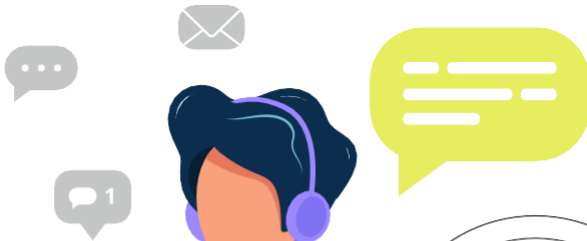


ENTP Mail's robust calendar makes scheduling meetings and events simple with features like:

- ▶ Attendees availability
- ▶ Conference room scheduling
- ▶ Support for different time zones
- ▶ Display start tasks and due dates
- ▶ Default calendar view (daily, weekly, monthly or all applications)
- ▶ Specify working/business hours
- ▶ On recurring events, delete/edit individual instances



Features	ENTP Basic	ENTP Plus	ENTP Pro
Mailbox Size	5GB	10GB	25GB
Sending Limit	500 Email/hour	1000 Email/hour	1000 Email/hour
Recipient Limit	25 Receipt/Mail	50 Receipt/Mail	100 Receipt/Mail
Attachment Size	25MB	25MB	25MB
File Storage	Yes	Yes	Yes
Email Alias	100	1000	Unlimited
Email Forwarders	100	1000	Unlimited
Calendar	Yes	Yes	Yes
Contact	Yes	Yes	Yes
Task	Yes	Yes	Yes
Notes	Yes	Yes	Yes
Mail Migration	Yes	Yes	Yes
Secure Webmail	Yes	Yes	Yes
Mail Protocol	Yes	Yes	Yes
Client Integration	Yes	Yes	Yes
Anti-Virus Protection	Yes	Yes	Yes
Spam Protection	Yes	Yes	Yes
Dual Delivery	-	Yes	Yes
Report	-	Yes	Yes
Mailing List	-	Yes	Yes
Group List	-	Yes	Yes
	₹599/Yr	₹849/Yr	₹1,149/Yr



Solution Planets

Email: info@solutionplanets.com

Phone: +91 98211 55656

WhatsApp: +91 81046 64284

